



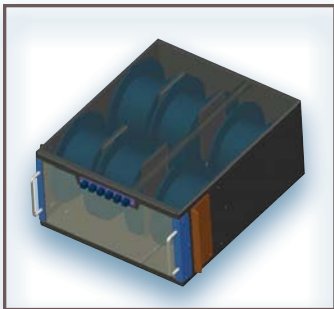
Fiber In A Box (Single Mode)

In high performance engineering test labs, it is often a mandatory requirement to test equipment's transmission capability over distance. Using real fiber to simulate the actual field environment is the best approach to obtain equipment's benchmark performance.

w-Ignite™ single mode (SM) Fiber-in-a-Box is the most reliable solution with flexible configurations. In a fully enclosed 6RU chassis, the Fiber-in-a-Box product provides custom fiber length per link with

up to total 200 kms distance. There are 6 spool and 8 spool configurations; each spool can accommodate multiple fiber links for a total 25km length. The front termination panel can support LC, SC, FC or ST type connectors.

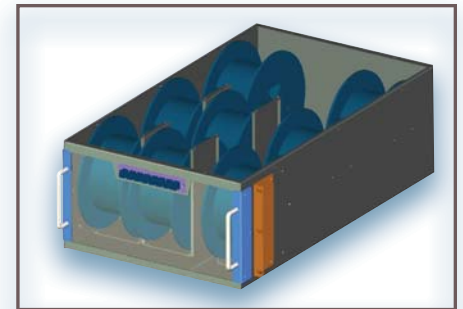
A user can order this product in an increment of 1km per link, and can order customized configuration per his/her articular needs. However, it is recommended to consult a sales rep before an order is placed



3 dimensional view of
Fiber-in-a-box with 6 fiber spools



Photo of the front view of
Fiber-in-a-box with 6 fiber spools



3 dimensional view of
Fiber-in-a-box with 8 fiber spools

Benefits

- 19" or 23" reversible mounting bracket to support both datacom and telco racks
- Fully secured 6RU chassis with plexi-glass front
- Swappable adaptor plate to support LC, SC, ST and FC connections
- Up to 200km Corning SMF-28e or equivalent SM fiber from other manufacturers
- 6 or 8 spool configurations to support multiple links per spool for high customization
- Custom fiber length with 1km increment
- Low insertion loss terminations and industry standard fiber specifications

Optical Specifications

- SMF-28e or similar type of single mode bare fibers
- Termination with LC, SC, ST, FC with UPC or APC polish

Mechanical Specifications

- Dimensions: 17.2" x 20.3" x 10.5" or
- 17.2" x 29.6" x 10.5" (6RU)
- Rack Mountable: 19" or 23"

Applications

- Telecom equipment testing and benchmarking
- Engineering performance tests and qualifications
- Optical transport system simulation
- Storage area network (SAN) fibre channel over
- Wide area network (WAN) benchmark testing

Environmental Compliance

- All of our products are certified with the highest quality standards

Optical Characteristics			
Characteristics	Conditions	Specified Values	Units
Attenuation	1310 nm	<0.35	[dB/km]
	1550 nm	<0.20	[dB/km]
	1625 nm	<0.24	[dB/km]
Attenuation vs. Wavelength Max. ∞ difference	1285-1330 nm	<0.03	[dB/km]
	1525-1575 nm	<0.02	[dB/km]
Dispersion coefficient	1550 nm	<18	[ps/(nm-km)]
	1625 nm	<22	[ps/(nm-km)]
Zero dispersion wavelength		1312 ±12	[nm]
Zero dispersion slope	-	<0.091	[ps/(nm ² -km)]
PMD Maximum Individual Fibre	-	<0.2	[ps/√km]
PMD Link Design Value (M=20, Q=0/01%)	-	<0.1	[ps/√km]
PMD Typical Value	-	0.04	[ps/√km]
Cable cutoff wavelength λ _∞		<1260	[nm]
Mode field diameter (MFD)	1310 nm	9.2±0.4	[μm]
	1550 nm	10.4±0.5	[μm]

Environmental Characteristics (1310 nm, 1550 nm & 1625 nm)

Temperature dependence Induced attenuation at	-60°C to +85°C	<0.05	[dB/km]
Temperature-humidity cycling Induced attenuation at	-10°C to +85°C, 98% RH	<0.05	[dB/km]
Watersoak dependence Induced attenuation at	23°C, for 30 days	<0.05	[dB/km]
Damp heat dependence Induced attenuation at	85°C and 85% RH, for 30 days	<0.05	[dB/km]
Dry heat aging at	85°C	<0.05	[dB/km]
Macro-bend induced attenuation			
1 turn around a mandrel of 32 mm diameter	1550 nm	<0.05	[dB]
100 turns around a mandrel of 50 mm diameter	1310 nm & 1550 nm	<0.05	[dB]
100 turns around a mandrel of 60 mm diameter	1625 nm	<0.05	[dB]



Optipop Fiber Cleaner (SC, ST, FC, E2000, LC, MU, MT)



Wave2Wave provides business essential infrastructure solutions that enable leading enterprises to unlock and realize the benefits of next generation data center technologies. Our data center product families include environmentally friendly and smart network cabling, modular and cost-efficient data centers, optical wavelength management systems and intelligent network infrastructure management software. Our products and solutions serve enterprise, government, military and service provider customers and markets in their mission critical data center and IT applications.



Headquarters: 517 Fairview Way Milpitas, CA 95035 • Website: www.wave-2-wave.com
 Email: sales@wave-2-wave.com • Phone: (877) 223-2296 • Technical Assistance: (408) 586-8800

© 2011 Wave2Wave Solution Corp. All rights reserved. w-ignite, w-intense, w-Lucid, w-Metro, w-MetroExpress, w-MetroMono, w-MetroVault, w-MetroXtreme, w-SphereWorks and Bringing Data Centers to Life are trademarks or registered trademarks of Wave2Wave Solution Corporation. All other company and product names may be trademarks or registered trademarks of their respective companies. Features and specifications are not guaranteed to be accurate and are subject to change without notice.