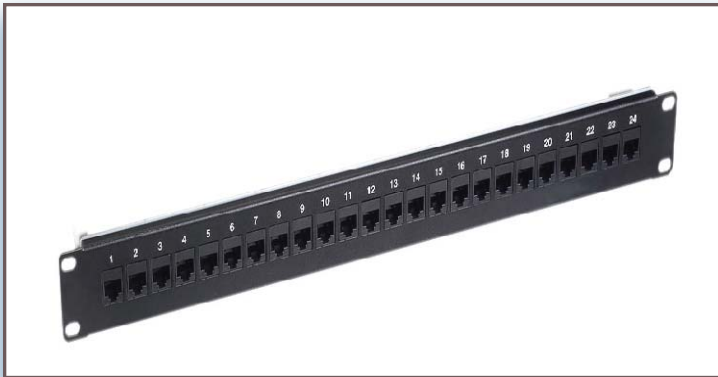




## Copper Patch Panels

Wave2Wave Solution Corp. manufactures a full line of patch panels designed with the user in mind. Each panel comes with RJ45 couplers for easy and trouble free installations and mounting, while meeting and exceeding TIA/EIA connecting hardware specifications. Wave2Wave's Patch Panels features a high-density, factory tested, modular connectivity solution to simplify installation of components connections.

The systems are designed to support locations such as data centers that require high-density, rapid deployment and high performance. Wave2Wave Patch Panel's features ensure easy, trouble free installation and mounting. The architecture is simple, scalable, and standards-compliant, making the system easy to design, configure, administer, and expand. The results are a more responsive network administration and tighter security.



CAT6/CAT6A, 24 port 1RU



CAT6/CAT6A, 48port 1RU

### Features

- Meeting the TIA/EIA-568-B.2-1 Category 6 Channel Testing Performance requirements
- Support T568 A&B wiring and easy installation
- Dual IDC connector can accept 22-26 AWG solid and stranded UTP cables
- 12 port wall mount patch panel, 24 (1U) & 48 (2U) ports available
- Terminate using 110 or Krone tools
- Interoperable and backward compatible to Category 3,5, 5E, and 6
- Offer total solution of your Local Networking Area
- All versions can be mounted on 19" EIA racks

## Benefits

- System design ensures fast, easy installation with low operating costs, enabling an organization to reduce labor and administrative expenses
- Sturdy construction making a perfect cord connection to ensure minimum risk of downtime.
- Provides configuration flexibility in a high density environment with a neat, organized, professional appearance
- Clear numbering on the front and back giving you a quick and easy way to identify cable runs
- Provides patching without punching down the wires to the ports
- Cable management bar helps support cables attached to the rear of the panel

## Specifications

- Dimension: 16.9" x 11.8" x 1.75" (1RU)
- Product Weight: 4.4 LB (2KG)
- Shipping Weight: 7 LB (3.2KG)
- Rack Mountable: 19"

## Applications

- Local Area Network
- 10BASE-T Ethernet
- 100BASE-TX Fast Ethernet
- 1000BASE-T Fast Ethernet
- Analog voice and digital voice (VOIP)
- Analog (broadband, baseband) and digital video

## Certifications

- UL/cUL Listed
- CAT6: ANSI/TIA/EIA-568-B.2-1
- CAT6A: ANSI/TIA/EIA-568-B.2-10
- ISO.IEC11801; FCC
- RoHS Compliant
- TAA Compliant

Part Numbers	
71-9060A-48	CAT6A High Density 48-Port Feed-Through Patch Panel, 1RU
71-9060A-24	CAT6A High Density 24-Port Feed-Through Patch Panel, 1RU
71-9060-48	CAT6 High Density 48-Port Feed-Through Patch Panel, 1RU
71-9060-24	CAT6 High Density 24-Port Feed-Through Patch Panel, 1RU



**Wave2Wave** provides business essential infrastructure solutions that enable leading enterprises to unlock and realize the benefits of next generation data center technologies. Our data center product families include environmentally friendly and smart network cabling, modular and cost-efficient data centers, optical wavelength management systems and intelligent network infrastructure management software. Our products and solutions serve enterprise, government, military and service provider customers and markets in their mission critical data center and IT applications.



Headquarters: 517 Fairview Way Milpitas, CA 95035 • Website: [www.wave-2-wave.com](http://www.wave-2-wave.com)  
Email: [sales@wave-2-wave.com](mailto:sales@wave-2-wave.com) • Phone: (877) 223-2296 • Technical Assistance: (408) 586-8800

© 2011 Wave2Wave Solution Corp. All rights reserved. w-ignite, w-intense, w-Lucid, w-Metro, w-MetroExpress, w-MetroMono, w-MetroVault, w-MetroXtreme, w-SphereWorks and Bringing Data Centers to Life are trademarks or registered trademarks of Wave2Wave Solution Corporation. All other company and product names may be trademarks or registered trademarks of their respective companies. Features and specifications are not guaranteed to be accurate and are subject to change without notice.