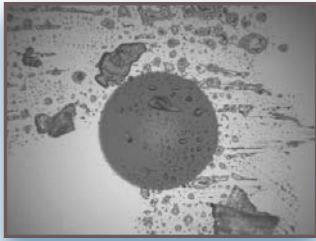
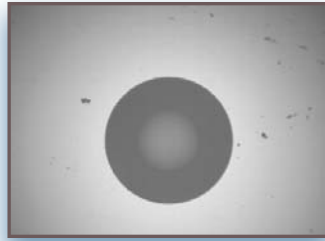




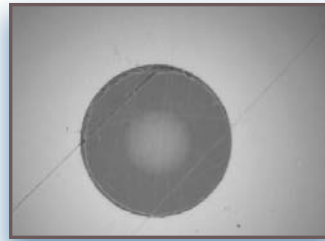
Fiber & Copper Resorting



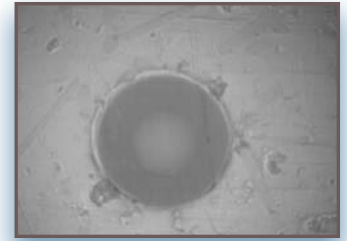
Before Cleaning



After Cleaning



Permanent Damage: Example 1



Permanent Damage: Example 2

Wave2Wave continually looks for ways to help preserve the environment. An important philosophy instilled in our business practice is the idea of "recycle, reduce, reuse". One way to reduce waste and reuse material is to utilize Wave2Wave's Fiber and Copper Resorting Services. For example, fiber optic and copper cables can be cleaned, tested and restored to original factory standard; which not only saves money, but helps the environment by cutting down on waste material.

Studies have shown that 70-80% of used cable can be cleaned and resorted to the standard specifications. Re-sorting services can save customers over 75% as opposed to buying new cable. In addition, resorting services cut down on pollution and less PVC material in companies' junkyards. Wave2Wave's resorting

service involves carefully cleaning and testing based on Telcordia GR-326 CORE standard. The testing and re-sorting procedure involves four important steps: Cleaning, Visual Test, Optical Test, and Re-Packaging.

Fiber Resorting Standard Services include the following: clean, test, sort by length and connector type, cover the connector with dust caps, and package. Optional Fiber services include the following: removing the label, adding label, clean cable.

Copper Resorting Standard Services include the following: sort by lengths and package cable. Optional copper services include the following: test cable, re-terminate broken connector, remove label, add label, clean cable.

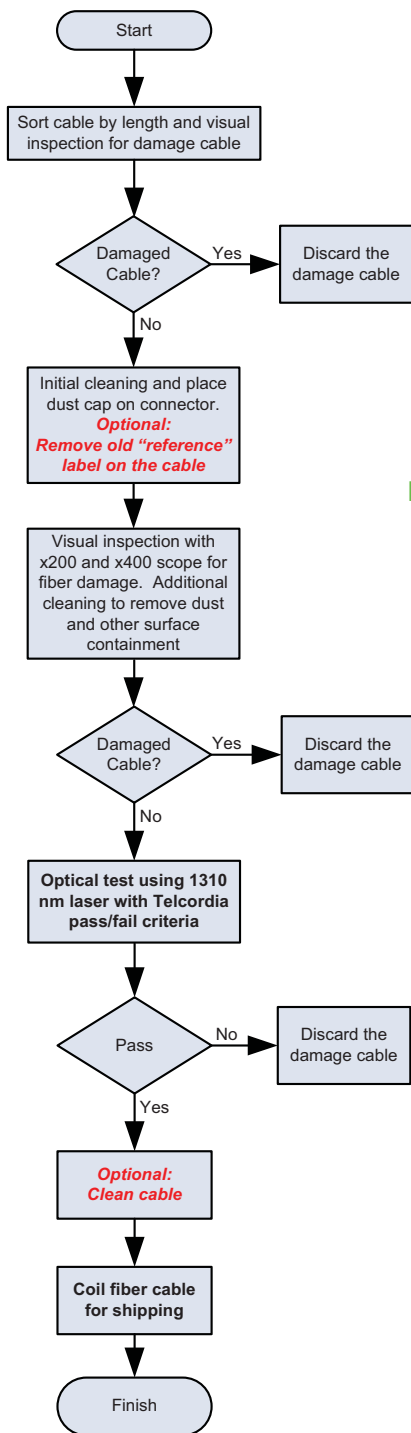


Before Re-Sorting

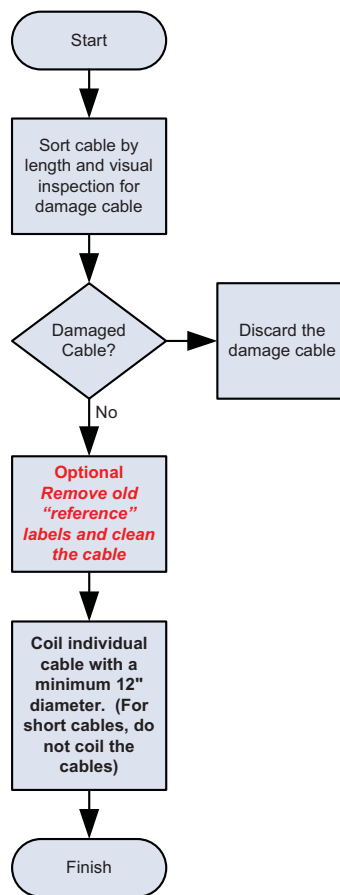


After Re-Sorting

Fiber Cable Resorting Flowchart



Copper Cable Resorting Flowchart



Reasons for Failure

- Physically broken, this includes broken connectors or clips that cannot be recovered and/or fiber (especially boot) broken off
- Permanent contamination or scratch
- Optical performance failure: tried to cycle through several times between the visual and optical test, continuously made sure that reference was good, test the fiber and if it doesn't pass it is cleaned again several times

Recommendations to Keeping Fiber Clean

- Put dust cap on as much as possible
- Avoid tying the fiber with dead knots
- Phase out fiber that is over 3 years old (PVC aging makes fiber cable very rigid)

Fiber Count and Pass/Fail Summary

Part #	Total		Pass %
LC-LC 1M	40	16	40%
LC-LC 2M	16	4	25%
LC-LC 3M	100	61	61%
LC-LC 5M	30	17	57%
LC-SC 1M	226	141	62%
LC-SC 2M	41	22	54%
LC-SC 3M	113	99	88%
v	2	2	100%
LC-SC 5M	20	11	55%
LC-SC 8M	26	22	85%
SC-SC 1M	68	61	90%
SC-SC 2M	48	38	79%
SC-SC 3M	58	44	76%
SC-SC 4M	20	18	90%
SC-SC 5M	54	50	93%
SC-SC 6M	6	6	100%
SC-SC 10M	13	11	85%
SC-SC 15M	19	15	79%
Simplex	15	10	67%
Measured in FT	12	12	100%
Total	927	660	71%

Wave2Wave provides business essential infrastructure solutions that enable leading enterprises to unlock and realize the benefits of next generation data center technologies. Our data center product families include environmentally friendly and smart network cabling, modular and cost-efficient data centers, optical wavelength management systems and intelligent network infrastructure management software. Our products and solutions serve enterprise, government, military and service provider customers and markets in their mission critical data center and IT applications.



Headquarters: 517 Fairview Way Milpitas, CA 95035 • Website: www.wave-2-wave.com
 Email: sales@wave-2-wave.com • Phone: (877) 223-2296 • Technical Assistance: (408) 586-8800

© 2011 Wave2Wave Solution Corp. All rights reserved. w-ignite, w-intense, w-Lucid, w-Metro, w-MetroExpress, w-MetroMono, w-MetroVault, w-MetroXtreme, w-SphereWorks and Bringing Data Centers to Life are trademarks or registered trademarks of Wave2Wave Solution Corporation. All other company and product names may be trademarks or registered trademarks of their respective companies. Features and specifications are not guaranteed to be accurate and are subject to change without notice.