



# w-Intense™ Standard CAT5E and CAT6 Patch Cable

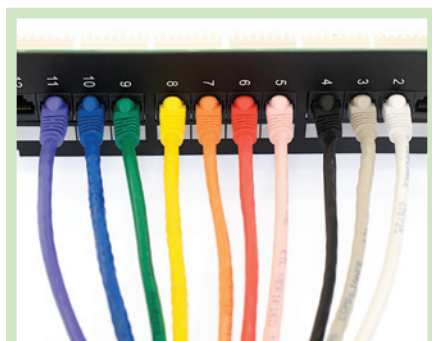
## Data Sheet

In today's enterprise and home networking environment, connectivity comes from high quality physical cable connections. Whether it is a network cluster, server, or printer, poor cable connections often result in hours of wasted time troubleshooting as well as loss of gigabytes of critical information.

**w-Intense™ Standard CAT5E and CAT6** cables offer the highest quality at an affordable price for both large and small enterprise networking applications. Every individual cable is tested and exceeds TIA/EIA performance requirements in its respective category. A variety

of colors are available with standard common lengths. **w-Intense™ Standard CAT5E and CAT6** cables come with a Snagless boot among many other features.

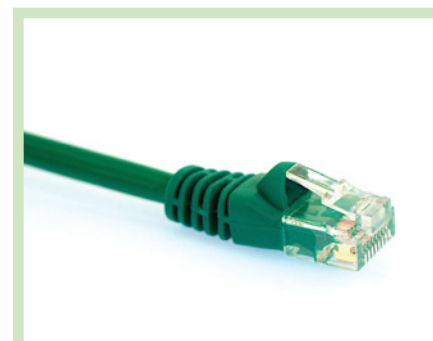
Network Cabling is often a time demanding task for installers and network administrators. Wave2Wave understands the challenge and we maintain a large volume of inventory for **w-Intense™ Standard CAT5E and CAT6** cables in a variety of colors and lengths in our domestic distribution centers for the same day shipping and local delivery.



w-Intense™ Standard Cables



w-Intense™ Standard Cable



w-Intense™ Standard Cable



# w-Intense™ Standard CAT5E and CAT6 Patch Cable

## Data Sheet

### Features

- 50 micro inch gold plating for each connector
- 350MHz for CAT5E and 550MHz for CAT6
- Snagless boot with softer feel
- Varieties of available colors with standard cable lengths
- Colors available: gray, black, green, blue, red, yellow, orange, white, purple & pink
- Common lengths: 1, 2, 3, 5, 7, 10, 14, 15, 25, 50, 75, 100 ft
- Large stocking quantity in domestic distribution centers
- TIA/EIA-568B.2 4-pair 24AWG stranded Cat5E 350MHz UTP cable
- TIA/EIA-568B.2 4-pair 24AWG stranded Cat6 550MHz UTP cable

### Benefits

- Highest performance and quality at a cost effective price point
- Ideal for large and small enterprise networking environments
- Various color choices to allow easy identification of network applications
- Robust network connectivity for long term network reliability

### Environmental Compliance

- All of our products are certified with the highest quality standards
  - TIA/EIA 568-B.2-1, © UL, RoHS



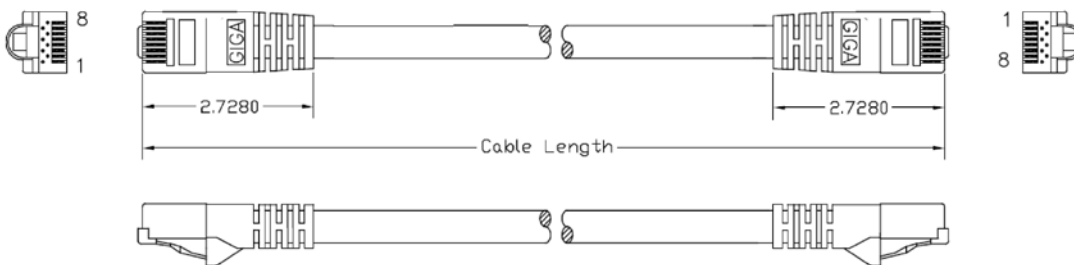
### Part Numbers

77 -  0  0 -     FT  
 | 1 | 2 | 3 | 4 | 5 | 6

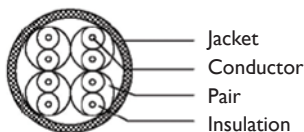
| 1 | 2 | 3-4 | 5-6

Cable Style	Cable Type	Jacket Color	Cable Length
1 = Straight Thru	5 = CAT5E	BL = Blue	(Standard lengths of: 1, 2, 3, 5, 7, 10, 14, 15, 25, 50, 75, 100 ft.)
2 = Crossover	6 = CAT6	BK = Black	
3 = Rollover		GN = Green	
4 = T1 Crossover		GY = Gray	
		O = Orange	
		P = Purple	
		R = Red	
		W = White	
		Y = Yellow	
		PK = Pink	

### CAT5E & CAT6 Diagram



### CAT5E Cable



### CAT6 Cable

